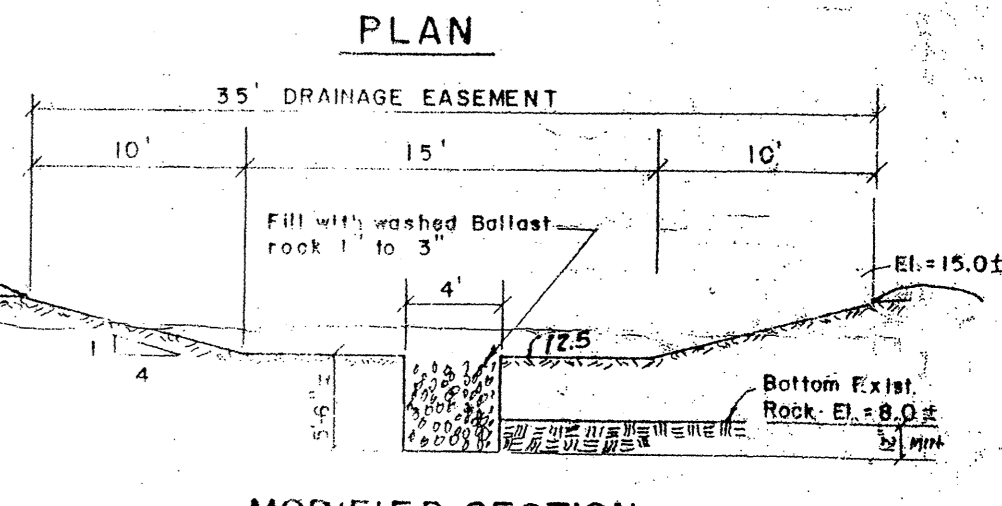
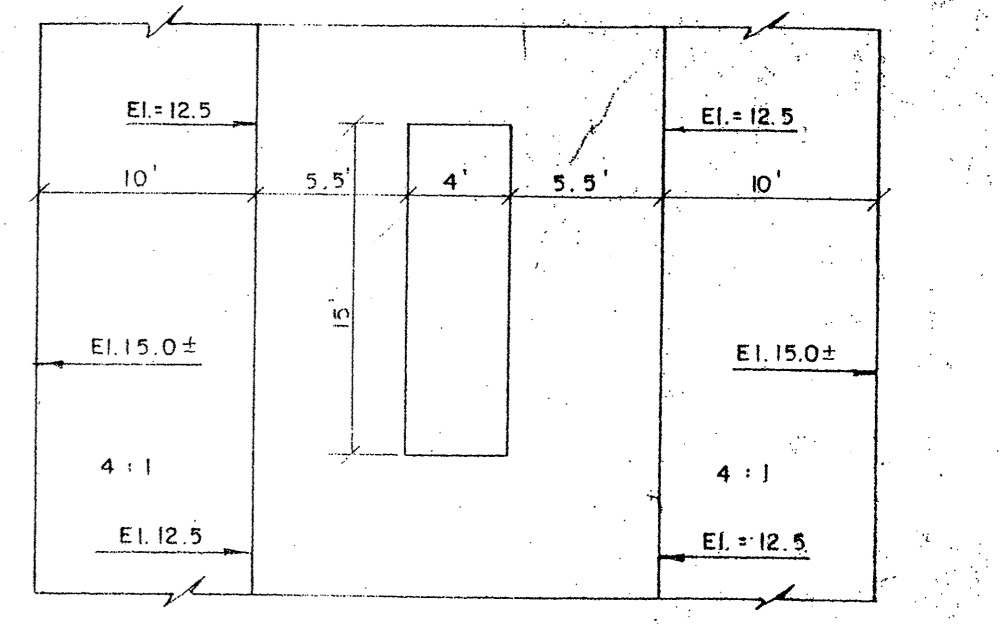
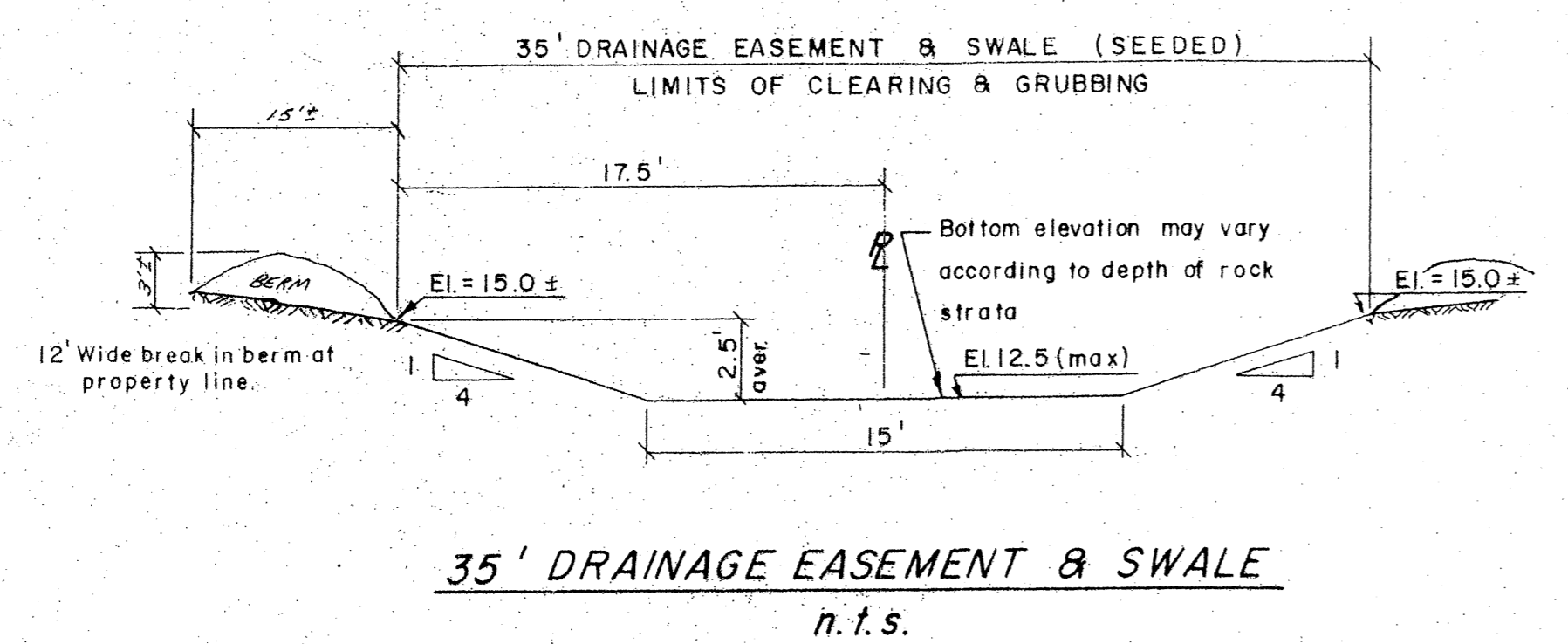


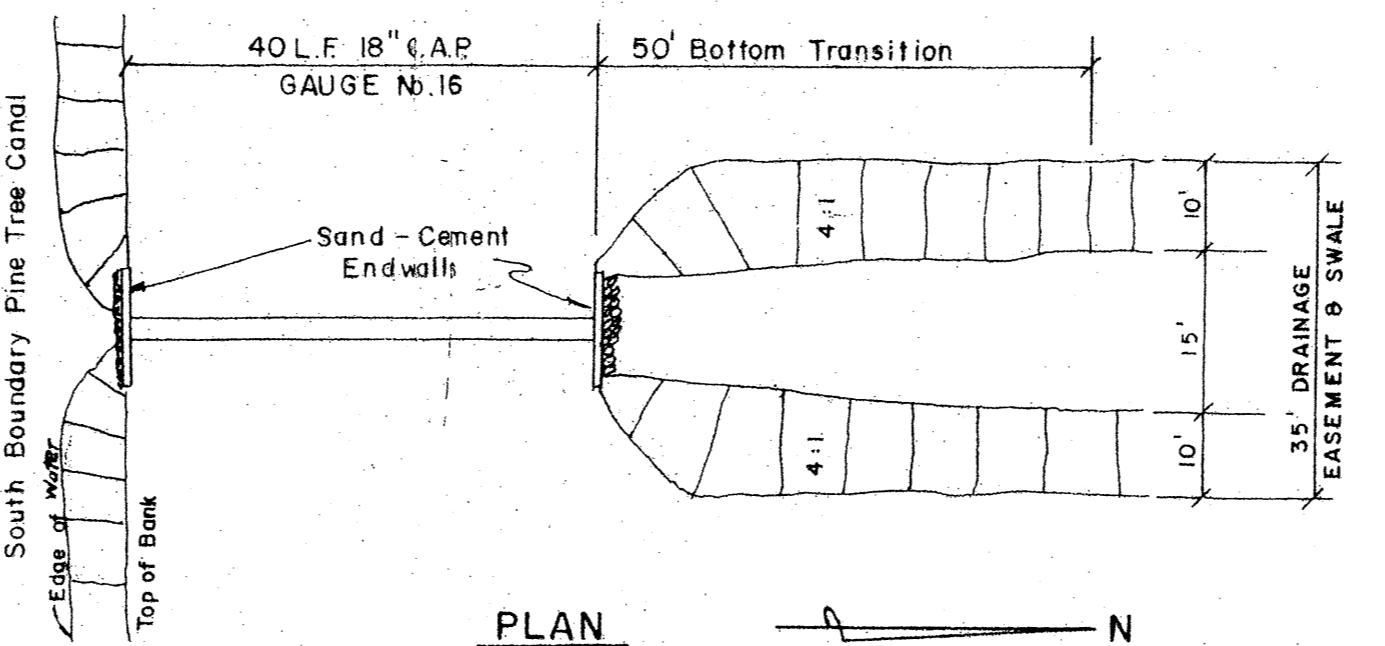
**GENERAL NOTES**  
 Elevations refer to N.G.V.D.  
 All construction and materials shall comply with the current standards and specifications of the City of Parkland, Broward County and South Florida Water Management District and D.O.T. where applicable.  
 Corrugated, helical metal pipe shall be bituminous coated steel or aluminum and in accordance with the latest D.O.T. specifications. Pipe shall be jointed with corresponding connecting bands and mastic or neoprene gaskets for a watertight connection. Gauge size shall be No. 16 for pipe and connecting bands.  
 The 17.5 ft. wide and 35 ft. wide Drainage Easements and swales shall be kept free and clear of all structures, trees and landscaping to permit infiltration and flow of storm waters.



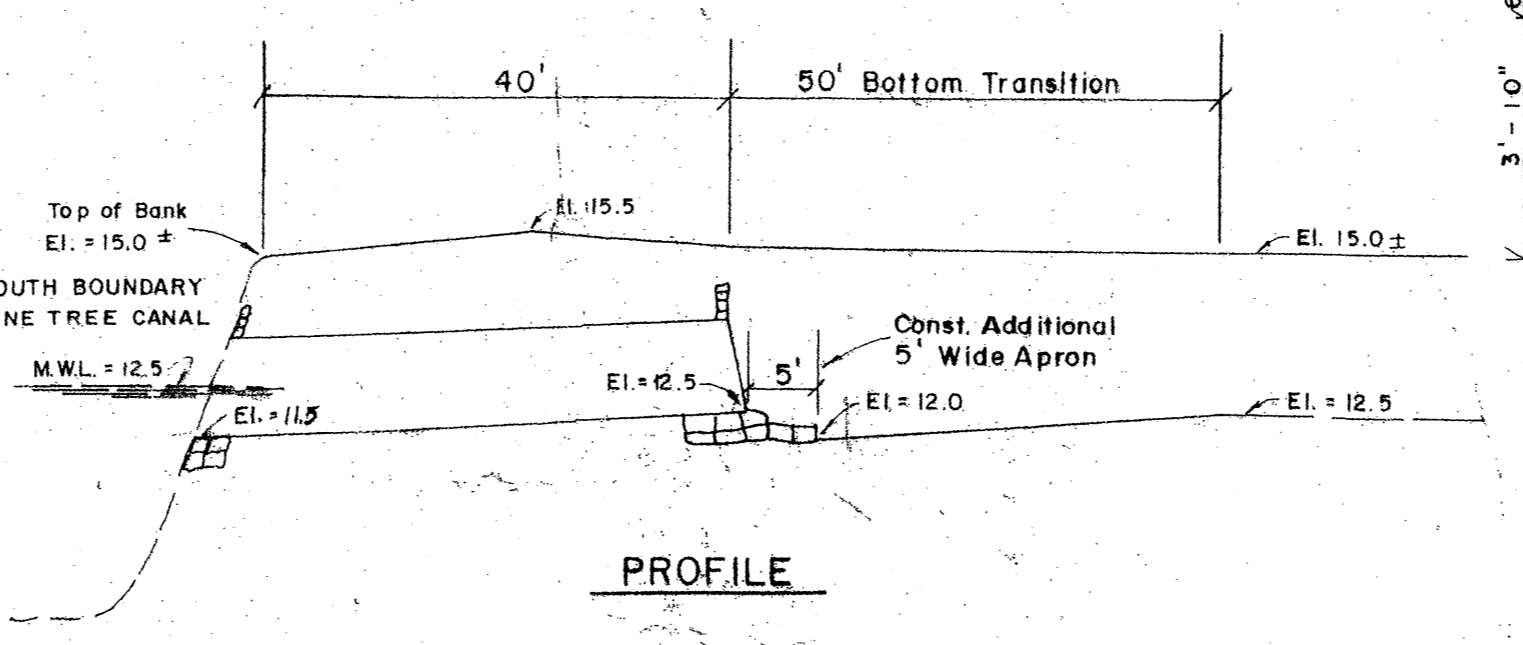
**TYPICAL SWALE DEEPENING at 600' INTERVALS**  
*n.t.s.*  
 NOTE: Typical swale box out shall be a minimum of 50' North of storm drain outfall and continue North at 600' intervals.



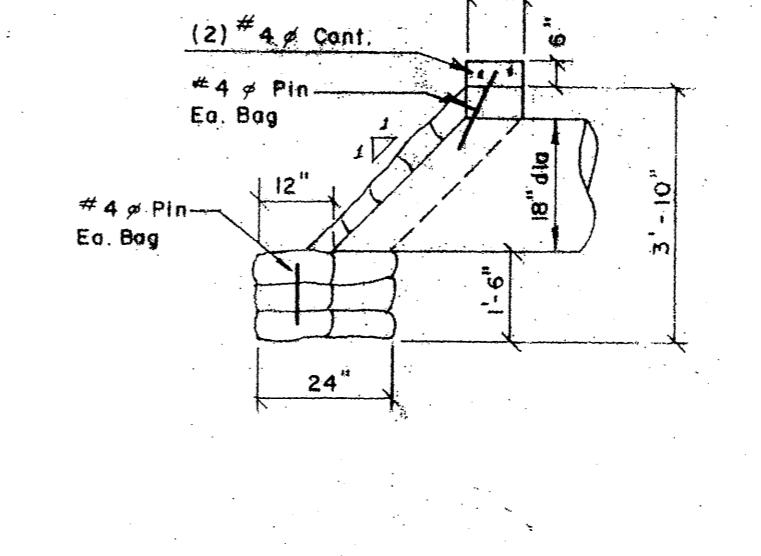
**35' DRAINAGE EASEMENT & SWALE**  
*n.t.s.*



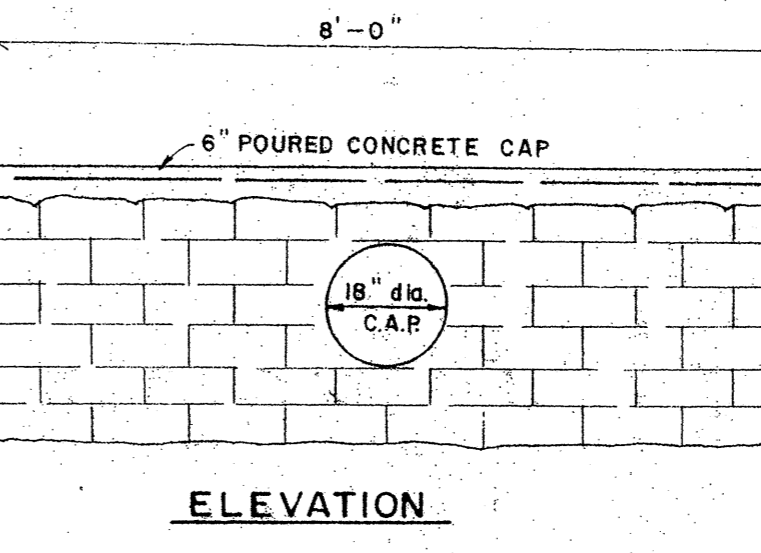
**PLAN**



**PROFILE**

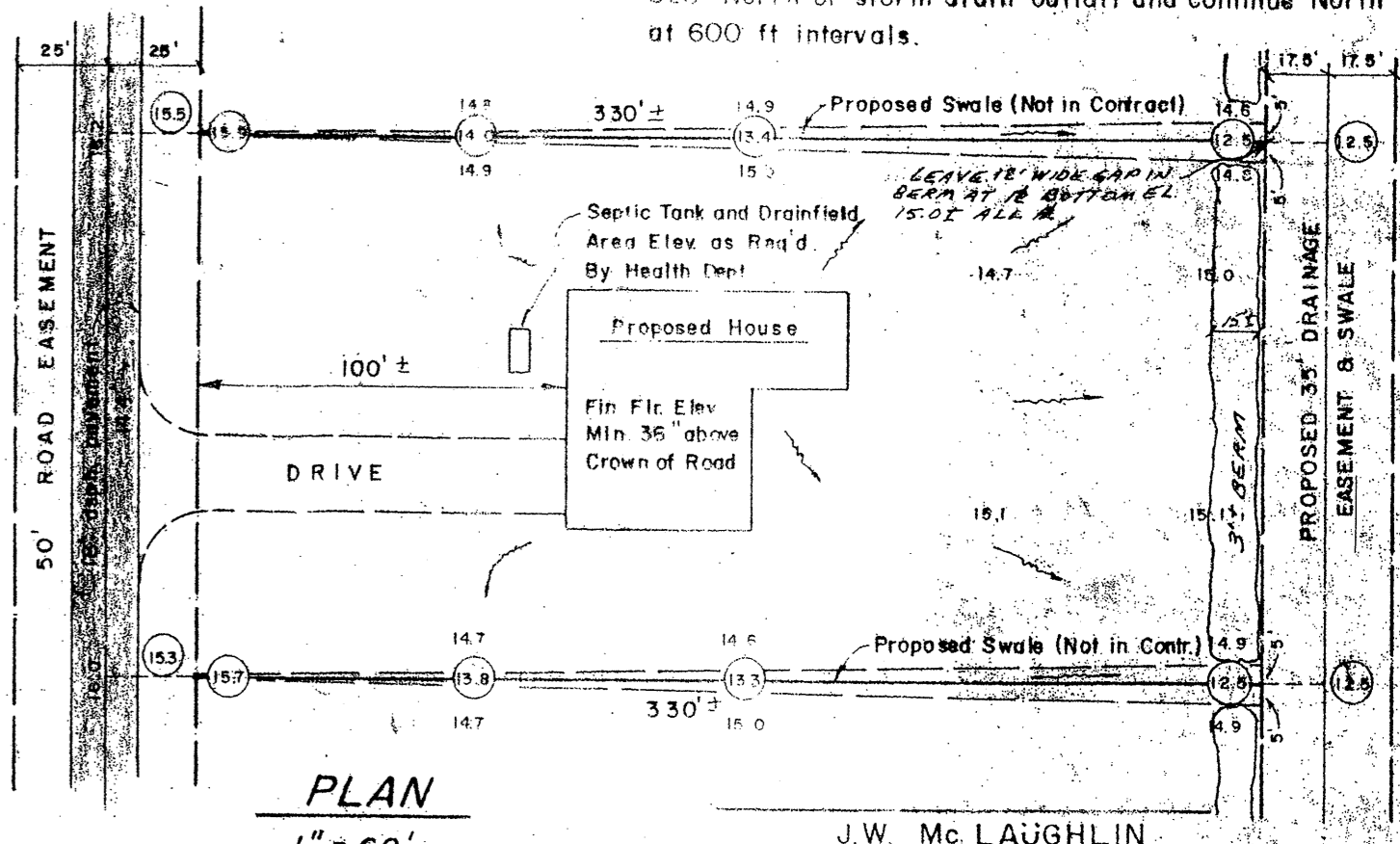


**SECTION**



**ELEVATION**

**SAND CEMENT ENDWALL**  
*n.t.s.*



**PLAN**  
 1" = 60'

**GENERAL NOTES**  
 (6.3) - PROPOSED ELEVATION  
 14.7 - EXISTING ELEVATION

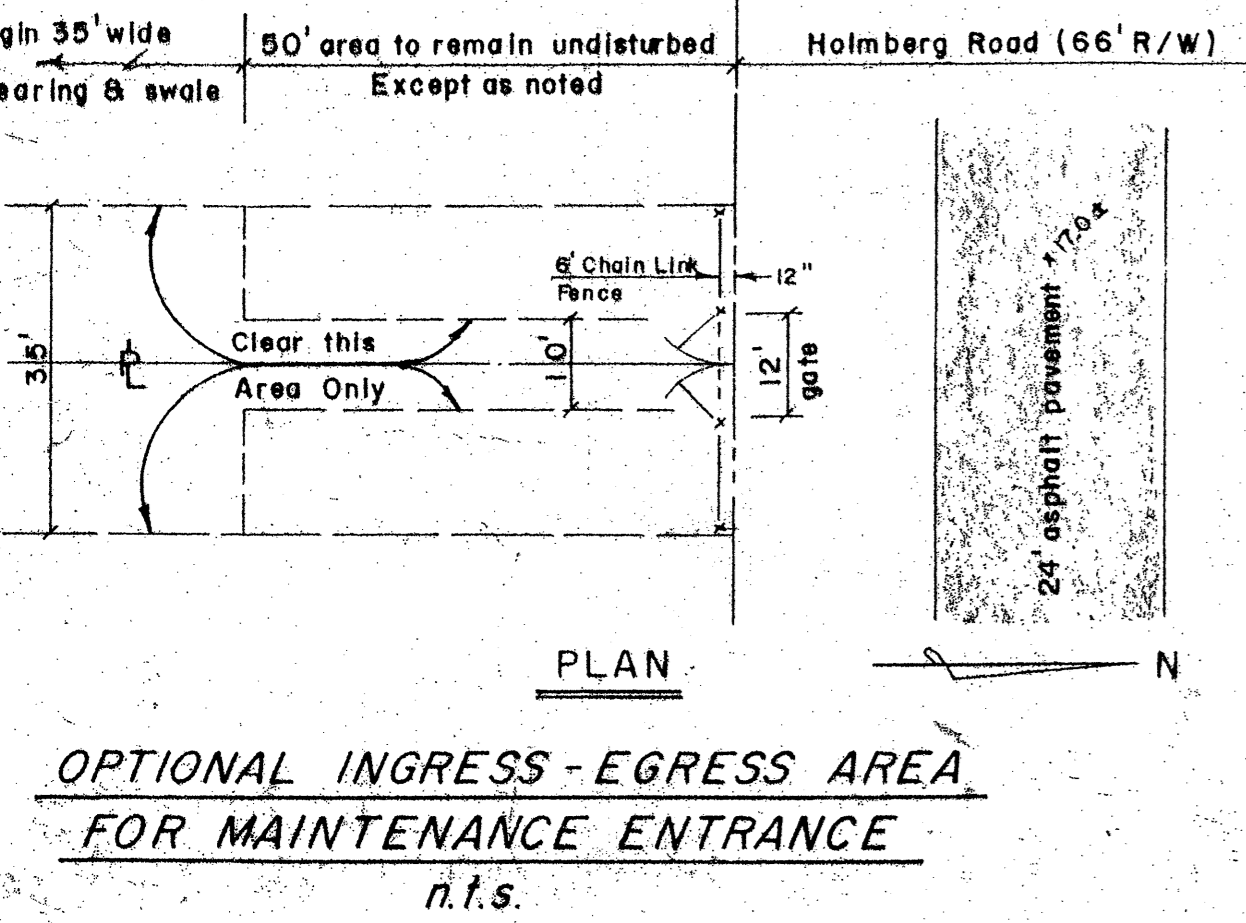
J.W. Mc LAUGHLIN  
 Registered Engineer, No. 1713  
 State of Florida

**PINE TREE ESTATES**  
 Lot 1 thru Lot 231, inclusive, South side of Holmberg Road, Sections 1, 2 & 11, Township 48 South, Range 41 East, City of Parkland, Broward County, Florida

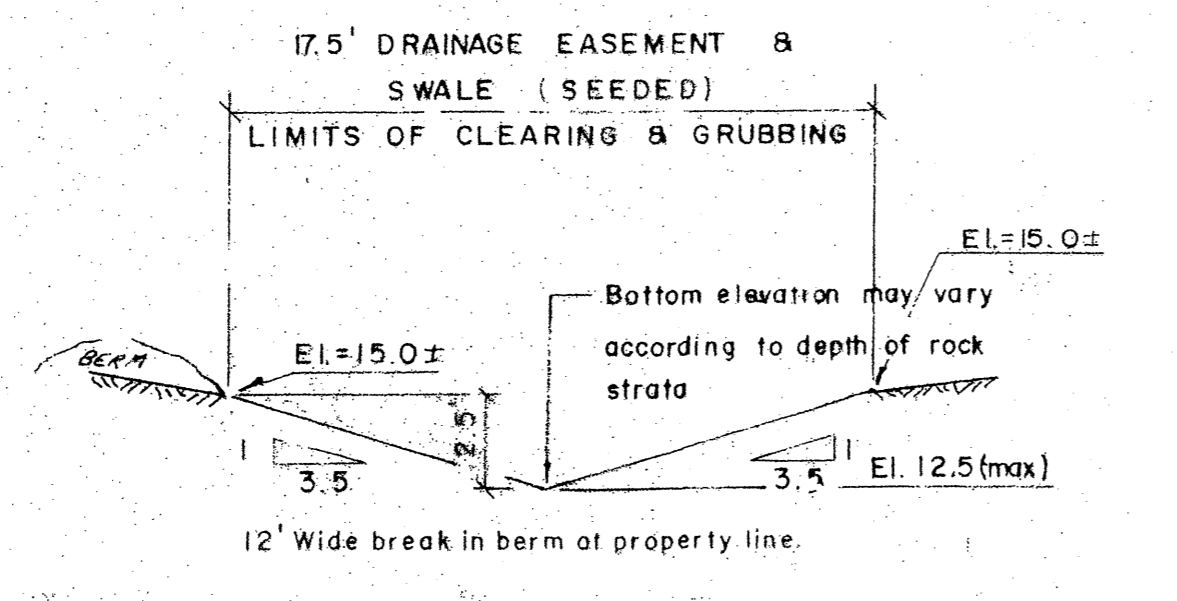
**DRAINAGE AND SWALE CONSTRUCTION PLAN**

Mc LAUGHLIN ENGINEERING CO.  
 400 N.E. 3rd AVENUE  
 FT. LAUDERDALE, FL 33301

Scale: 1" = 400' Date: June 3, 1983  
 Job No.: N-1039 U-39/A Drawn by: P.A.L.



**OPTIONAL INGRESS-EGRESS AREA FOR MAINTENANCE ENTRANCE**  
*n.t.s.*



**17.5' DRAINAGE EASEMENT & SWALE**  
*n.t.s.*  
 (LOOKING NORTH)

**TYPICAL OUTFALL CULVERT AT CONNECTION TO PINE TREE CANAL**  
*n.t.s.*

NO.	DESCRIPTION	DATE
1	ADDED 17.5' DRAINAGE EASEMENT (Lot 187-A) DELETED SECTION 12	2-2-84
2	ADDED PARCELS WHICH EASEMENTS WOULD NOT BE IN CONFLICT	7-18-84
3	Adjusted Swale Slopes From 3:1 To 4:1	8-18-83
4	Revised Drainage Easement in Lots 9 thru 14 from 100' to 17.5'	7-19-83
5	Revised Drainage Easement in Lots 145 thru 160 from 35' to 17.5'	7-13-83
6	EXTEND DRAINAGE EASEMENTS FOR PARCELS TO ADJ. DIST. SOUTH CANAL FOR W.A.D.	6-25-83